

# ULTRA·VIZION TRANSPARENT 4K HD ANTENNA USER MANUAL

UVC22US01



ULTRA·VIZION IS A U.S.A. BASED & OWNED COMPANY  
ULTRA·VIZION PRODUCTS ARE DESIGNED & ENGINEERED IN THE U.S.A.  
MADE IN SO. KOREA & P.R.C.

BEFORE USING ULTRA·VIZION ANTENNA,  
PLEASE READ THIS USER MANUAL CAREFULLY.



Antenna x 1



User Manual



Tabs



Amplifier x 1



TV Connector

+  
USB Plug

## ULTRA·VIZION PRODUCT INFORMATION

1. Frequency range: VHF 170-230Mhz; UHF 470-862Mhz
2. VSWR:  $\leq 2.0:1$
3. Impedance:  $75\Omega$
4. Gain: 5dBi (Without Amplifier)/ 25dBi (With Amplifier)
5. Connector: F Male
6. Power supply: USB port (5V / 500 mA)
7. Cable length: 16.5 ft
8. Polarization: Horizontal / Vertical

## ULTRA·VIZION LOCAL COVERAGE

Please check our coverage map to know exactly which channels your area gets.  
[ultra-vizion.com/coverage](http://ultra-vizion.com/coverage)

## SIMPLE INSTRUCTIONS SET-UP

1. **CONNECT** Power Amplifier to TV USB or Power Outlet (With Adapter Included), then Attach TV Coax to TV (Adapter for Plug-in Included).
2. **LOCATE** Your Local Tower Location.
3. Position Flat Face of ULTRA·VIZION towards Towers.
4. Placing in Window with NO OBSTRUCTIONS will provide Best Reception.
5. Auto-SCAN TV for Channels.
6. Watch TV.

NOTE: Re-scan every month to discover new channels!

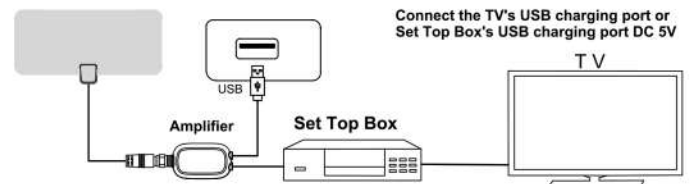
## ULTRA·VIZION 1. CONNECT

Connect ULTRA·VIZION to your television.  
[ultra-vizion.com/connect](http://ultra-vizion.com/connect)

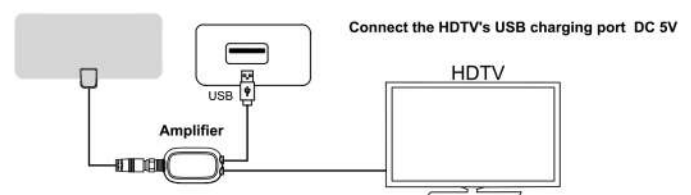
1. Connect coaxial cable of amplifier to the ANT/IN or CABLE IN port on the back of TV/STB.
2. Plug the amplifier's USB connector into an open USB port on the back of TV/STB or into a wall outlet using power adapter (greenlight indicates amplifier is on).
3. If the TV tower is very close to you, you may not need to connect the antenna directly to the TV or STB.

## OPTION 1 - WITH AMPLIFIER CONNECTION

a. Connected to Set Top Box

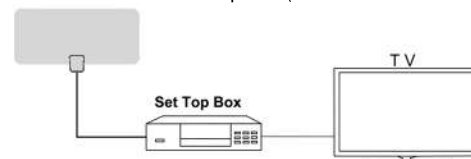


b. Connected to TV with HDTV Tuner

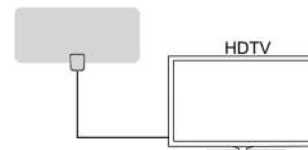


## OPTION 2 - NO AMPLIFIER CONNECTION

a. Connected to Set Top Box (HDTV Tuner is sourced from the Set Top Box)



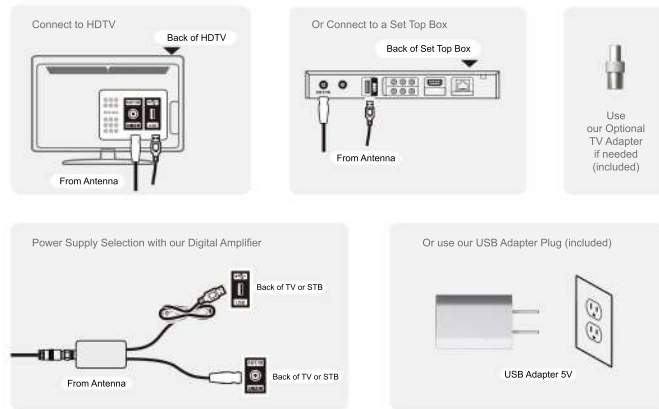
b. Connected to TV with HDTV Tuner (HDTV Tuner is sourced from the Set Top Box)



Try connecting with and without amplifier to find out which option is the best for your location.

## 1. CONNECT ... (Continued)

### Plug Connections



## 2. LOCATE & SET

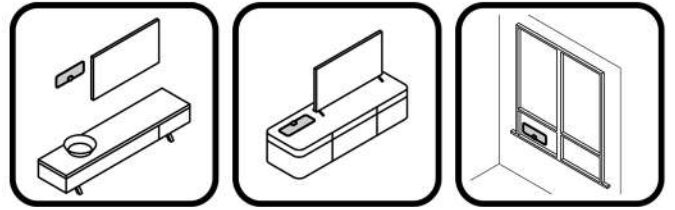
Locate your local antenna tower and set your antenna in the best possible location.  
[ultra-vizion.com/locate](http://ultra-vizion.com/locate)

Using our online tool\*, find exactly where your local antenna tower is located. **FOR BEST RECEPTION, PLACE ANTENNA IN WINDOW AWAY FROM METAL WINDOW FRAMES. AVOID LINE-OF-SIGHT OBSTRUCTIONS. POSITION ANTENNA FACE TOWARDS THE DIRECTION OF THE TV BROADCAST TOWERS.**

**NOTE:** Reception quality and the numbers of channels received are dependent on multiple factors like distance from TV broadcast tower, broadcast power, line of sight, terrain, metal construction materials and other environmental factors.

## 2. LOCATE & SET... (Continued)

\* To locate the TV transmission towers in your area, go to [ultra-vizion.com/locate](http://ultra-vizion.com/locate) - When you have located the towers in your area, position the flat face of your ULTRA-VIZION antenna to face the towers. Use the transparent stickers (double-sided tabs) to set / fix ULTRA-VIZION to your window.



The antenna can be placed 3 ways: a. On Wall, b. On Table, c. On Window (Recommended Option).

## 3. AUTO-SCAN

Go to your TV settings and look for auto-scan.  
[ultra-vizion.com/scan](http://ultra-vizion.com/scan)

Scan for channels using your TV's antenna auto-scan functions and be ready to enjoy free 4k and HD TV channels. If reception is sporadic, try moving the antenna to another location and rescanning the TV tuner until optimal position is found.

If a signal can't be received when using the amplifier, remove the amplifier and try again. In some instances, the amplifier may cause self-oscillation which may interfere with signal reception.

## TIPS

1. Make sure your TV has a HDTV Tuner; if not, you will need to buy a Digital Converter Box.
2. Not all digital signals are High Definition. Ensure your digital receiver is a HD receiver, otherwise no HD channels can be viewed.
3. Make sure you install the antenna and amplifier correctly, the amplifier comes with a USB cable, and this cable should be powered through a USB charging port, the indicator light will be green when working.
4. Position the antenna to a higher location, preferably on a window or if a window is unavailable, a wall with no outside obstacle, trees, buildings, etc. Recommend mounting is in the window for best results.
5. Position flat area of antenna towards the broadcast towers. Always rescan for channels after moving the antenna.
6. If the received signal is not good, try changing the antenna direction, whether the installation direction is horizontal or vertical, and then rescan for channels.
7. TV reception is dependent on the distance from your location to the transmitting tower and surrounding environments.
8. Reception will vary based on factors like geography and location of the broadcast signal; hills, buildings and even tall trees can impact reception.
9. Mobile homes with metal roofs and / or awnings will not benefit from this antenna.
10. Keep the antenna away from any sources of interference: large power consumption devices, such as air conditioners, elevators, hairdryers, and microwave ovens.
11. If you live in area that is near the transmission tower, there may be no need to boost the signal strength. If you live in a rural area where the signal is weak or intermittent, you may want to use the amplifier kit to enhance your reception.
12. Re-scan for TV channels every month and / or retune your digital receiver to ensure you are receiving all available channels. Re-scanning and tuning takes only a few minutes and can be done with your remote control.
13. This digital HDTV antenna is intended for indoor use only.

Note: if the amplifier is not being used, please attach antenna cable directly to TV. Do not attach antenna cable to amplifier.

## FAQ

**Q: Will all the channels I receive be High Definition (HD)?**

**A:** Not all digital signals are High Definition (HD). Make sure you are using a High Definition Television (HDTV) with built-in ATSC tuner. When connecting the antenna to a third-party receiver, make sure it can receive HD. Otherwise, no HD channels can be received.

**Q: Can you put the antenna behind the TV?**

**A:** Yes, but it may not be the ideal location for the antenna. The TV will block some of the signal, which will weaken the signal.

**Q: Are channel lineups available?**

**A:** No. The channels you can receive depend on many complex factors such as distance to the transmitting antennas, ULTRA-VIZION height above ground, the tower direction, trees blocking a clear view, etc. ... After performing the first scan on your TV with your ULTRA-VIZION antenna, you will immediately see what channels are available.

**Q: Is this just like a streaming device?**

**A:** No, ULTRA-VIZION is a 4K HD antenna that plugs into your TV, so you can have TV anywhere in your house without having to run cables. ULTRA-VIZION compliments all your streaming devices by adding local and sports events for free.

**Q: How many channels can I receive?**

**A:** The number of channels you can receive will be determined by what is being broadcast in your area. Channel reception will vary from location to location based on terrain (including trees, buildings, hills, and mountains). The fewer obstructions, the better your chance of receiving strong digital signals.

Go to [ultra-vizion.com/coverage](http://ultra-vizion.com/coverage). Enter your address for a listing of likely channels available in your area.

**ULTRA-VIZION**  
[ultra-vizion.com/support](http://ultra-vizion.com/support)  
ULTRA-VIZION Miami Beach, FL 33139 USA

